

TAHLEE



a
great place
for your

Conference,
Camp,
Retreat or
Family Holiday

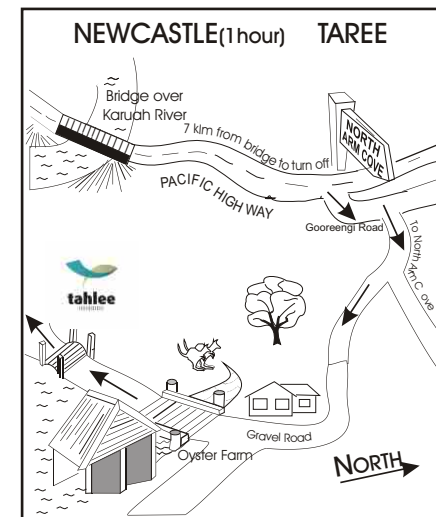
Camping Policy

- * All campers need to abide by the regulations as detailed in the Visitors Information Sheet you will receive when you check in. Please ensure at least one member of your group has checked in by 7.30pm.
- * No alcohol or drugs are permitted on the property. No smoking is permitted in or near the buildings.
- * No pets or animals are permitted on the property.
- * The Retreat Centre shares the same property as Tahlee Ministry Centre and Bible College. As this site is residential, the privacy of staff and students is to be respected.
- * You are responsible for all First Aid required by your group.
- * Camp leaders and parents are responsible for supervising the use of Tahlee equipment and facilities, and all damages, losses and breakages must be paid for.
- * At the end of your stay, all facilities are to be cleaned and equipment, furniture, bedding etc to be returned to their original position.
- * A deposit is required to confirm a booking. This will be refunded by cheque, after inspection, if the facilities have been left clean, any damage paid for and all keys returned.



Where is Tahlee?

Tahlee is situated in a rural setting on the north shore of Port Stephens, surrounded by quiet bushland, 13 km north of Karuah. You are most welcome to come and visit - just phone to make arrangements.



Note: The Pacific Highway now bypasses Karuah.

Bookings are essential.
For more information, contact:

The Hostess
Tahlee Ministries Inc.
Via Karuah NSW 2324
Phone: 02 4997 3003
Fax: 02 4997 3272
Email: secretary@tahlee.org

Accommodation

Two flats and eight rooms are available, providing accommodation for up to 41 people. The amenities and kitchen/dining areas are contained within the same complex for your convenience. Flats 1 and 2 have a small kitchen with crockery, cutlery, cooking utensils, toaster, jug, fridge, microwave and stove. Coin-operated washing is available in the laundry.

- Flat 1:** 1 double bed, 4 single beds, 1 bunk bed
- Flat 2:** 1 double bed, 1 single bed, 1 bunk bed
- Rooms 1-5:** 2 single beds and 1 bunk bed in each
- Rooms 6-7:** 2 single beds in each
- Room 8:** 2 single beds (can be joined to make a king size bed) and 1 bunk bed

Meals (Self-catering)

The kitchen/dining area and the two flats are equipped to allow groups to self-cater. A gas barbecue and two wood barbecues are also available (dependent on fire restrictions).

Meeting Rooms

A large room is available allowing ample space for you to meet together as a group. It is equipped with OHP, PA system and VCR/DVD.

Recreational Activities

Inside: Badminton, pool, table tennis.

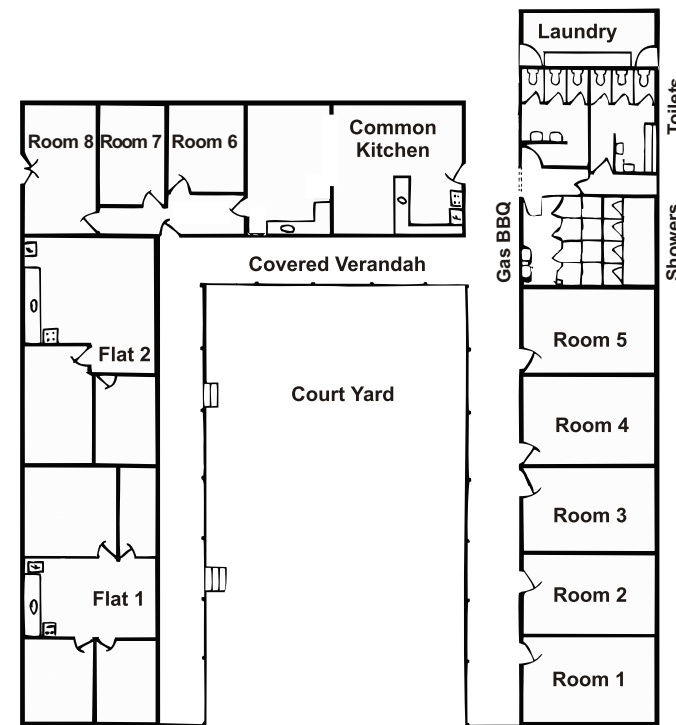
Outside: Swimming, bushwalking, volleyball court, soccer field and spacious grounds for other sports. Historic tours of the Tahlee property can be arranged (prior to your visit).

Popular Tourist Area

Fifteen minutes drive to Tea Gardens and Hawks Nest for beaches, dolphin-watch tours.

What to bring

- * tea towels
- * pillowslip (one pillow provided per person)
- * sleeping bag or sheets and blankets
- * personal items including a torch and insect repellent



CAMP CENTRE ACCOMMODATION

Costs per person per day*:

- Adults and young people 12 and over: \$20
- Children 3 - 11: \$10
- Under 3's: free

Payment can be made by cash, cheque, money order, EFTPOS or credit card.

Higher prices apply during the peak December - January school holidays

Camping

A camping ground with eight powered sites and amenities block is available for groups of up to 30 people to camp in tents or caravans.

Campers would need to provide their own tents or caravans, cooking utensils, linen, power leads etc.

TENT & CARAVAN ACCOMMODATION

Costs per day*:

- Powered site: \$20 per site
- Unpowered site: \$10 per site
- 1 site = 1 tent or caravan

* A day = up to 24 hours from time of arrival