

# TAHLEE



a  
great place  
for your next

Conference,  
Camp,  
Retreat or  
Family Holiday

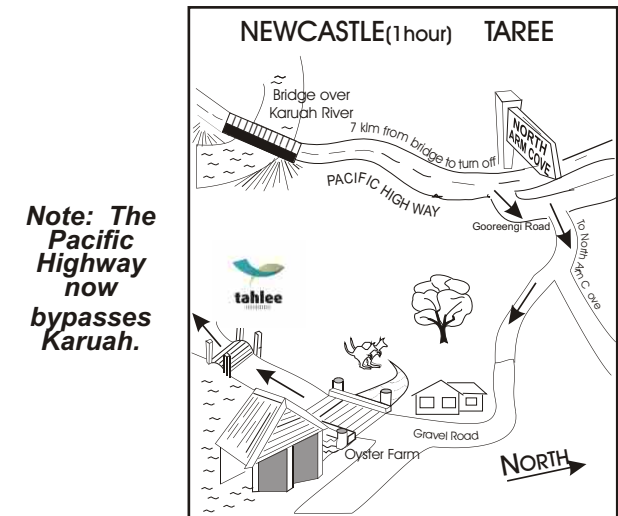
## Visitors' Policy

- \* All visitors need to abide by the regulations detailed in the Visitors' Information Sheet you will receive when you check in.
- \* Please ensure at least one member of your group has checked in by 7.30pm.
- \* No alcohol or drugs are permitted on the property. No smoking is permitted in or near any buildings.
- \* No pets or domestic animals are permitted on the property.
- \* The accommodation shares the same property as Tahlee Ministry Centre and Bible College. As this site is residential, the privacy of staff and students is to be respected.
- \* You are responsible for all First Aid required by your group.
- \* Group leaders and parents are responsible for supervising the use of Tahlee equipment and facilities, and all damages, losses and breakages must be paid for.
- \* At the end of your stay, all facilities are to be cleaned and equipment, furniture, bedding etc to be returned to their original position.
- \* A deposit is required to confirm a booking. This will be refunded by cheque, after inspection, if the facilities have been left clean, any damage paid for and all keys returned.



## Where is Tahlee?

Tahlee is situated in a rural setting on the northwestern shore of Port Stephens, surrounded by quiet bushland, 13 km north of Karuah, 50 minutes north of Newcastle. You are most welcome to come and visit - just phone to make arrangements.



*Note: The Pacific Highway now bypasses Karuah.*

Bookings are essential.

For more information, contact:

The Hostess  
Tahlee Ministries Inc.  
Via Karuah NSW 2324  
P: 02 4997 3003  
F: 02 4997 3272  
E: [secretary@tahlee.org](mailto:secretary@tahlee.org)  
[www.tahlee.org](http://www.tahlee.org)

## Accommodation

### Retreat Centre:

Two flats and eight dormitory rooms are available, providing accommodation for up to 41 people. The amenities and kitchen/dining areas are contained within the same complex for your convenience. Coin-operated washing is available in the laundry.

Flats 1 and 2 have own small kitchens with crockery, cutlery, utensils, appliances, fridge and stove.

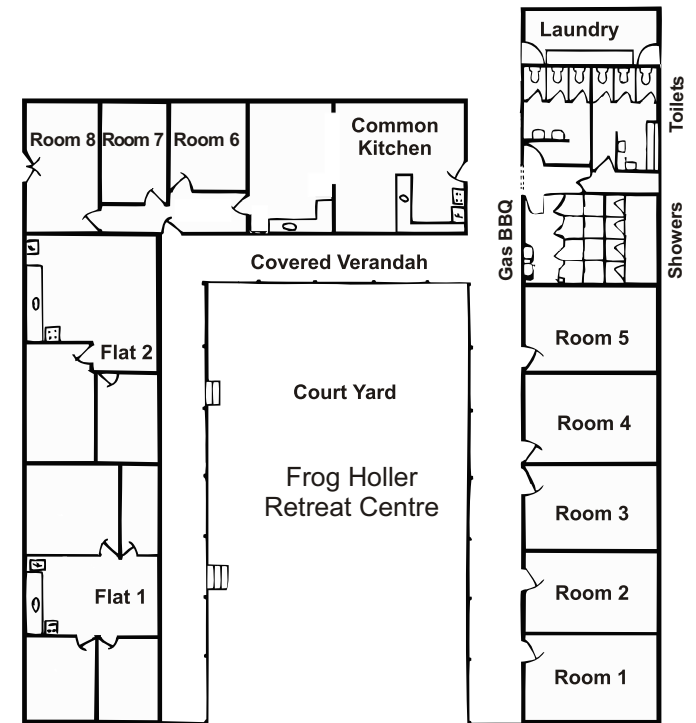
- Flat 1:** 1 double bed, 4 single beds, 1 bunk bed
- Flat 2:** 1 double bed, 1 single bed, 1 bunk bed
- Rooms 1-5:** 2 single beds and 1 bunk bed in each
- Rooms 6-7:** 2 single beds in each
- Room 8:** 2 single beds (can be joined to make a king size bed) and 1 bunk bed

### Camping Grounds:

Eight powered sites and an amenities block are available for tents or caravans. Some unpowered sites are also available. Campers need to provide their own tents or caravans, cooking utensils, linen, power leads etc.

### Houses:

Sometimes we have fully self-contained duplexes or townhouses available. Houses are two, three, four or five bedrooms, with own bathroom and kitchen. Most also have own laundry facilities. Please check availability when booking. Plans can be downloaded from the Tahlee website: [www.tahlee.org](http://www.tahlee.org)



## Meals (Self-catering)

All accommodation is self-catered, with separate cooking facilities for each. A gas barbecue and two wood barbecues are also available (dependent on fire restrictions).

## Meeting Room

A large room is available allowing ample space for you to meet together as a group. It is equipped with OHP, PA system and VCR/DVD. Please enquire when booking.

## Recreational Activities

Historic tours of the Tahlee property can be arranged (in advance).

**Inside:** Volleyball, pool, table tennis.

**Outside:** Swimming, bush walking, volleyball court, soccer field and spacious grounds for other sports.

## What to bring

- \* sleeping bag or sheets and blankets, pillowslip (one pillow provided per person)
- \* personal items including a torch and insect repellent

Payment can be made by cash, cheque, money order, EFTPOS or credit card.

### RETREAT CENTRE

#### Costs per person per day\*:

Adults and young people 12 and over: \$20  
 Children 3 - 11: \$10  
 Under 3's: free

Higher prices apply during the peak  
 December - January school holidays  
*Prices subject to change*

### TENT & CARAVAN

#### Costs per day\*:

Powered site: \$20 per site  
 Unpowered site: \$10 per site  
 1 site = 1 tent or caravan

\* A day = up to 24 hours from time of arrival

### HOUSES

#### Costs per day\*:

2 bedroom: \$50 for up to two adults  
 3 bedroom: \$60 or \$70 for up to three adults  
 5 bedroom: \$90 for up to five adults  
 Dependent children included,  
 extra adults \$10 each